

# BY WATER BY LAND

## PORT TOWNSEND



CAROLYN LAW

## WHAT IS IMPORTANT FOR ME

### TO COLLABORATE WITH PEOPLE IN PORT TOWNSEND

PORT TOWNSEND SAIL

MARITIME HERITAGE CENTER

PORT TOWNSEND RIGGING

VARIOUS CONTRACTORS

CAROL HASSE

KEES PRINS

### TO CREATE ARTWORK THAT IS

INTEGRATED INTO AND SIGNIFICANTLY ADDS TO THE PARK AND PLAZA

ICONIC IN SCALE AND BY EXPRESSING SOMETHING ESSENTIAL ABOUT PORT TOWNSEND

LARGER THEN JUST THE ARTWORK AND CREATES A “ MORE EXCITING PLACE”

CREATES A GATHERING AREA

CAN BE PLAYED WITH AND ON

CHANGES EVERYONE’S VIEWS AND THOUGHTS OF THE LAND AND THE WATER

REGISTERS THE WIND, SHADOWS, AND THE SHIFT FROM DAY AND NIGHT

RESEARCH





# BOATS AND BOAT BUILDING

MY APPROACH TO THIS ART PROJECT WAS  
INFORMED BY THE COLLABORATORS  
I WISHED TO WORK WITH IN  
PORT TOWNSEND



The richness of boatbuilding parallels the richness of community

Boats are a metaphor for our personal and community journeys



# FORM



A sailing boat's many forms are a wonderful springboard for thinking about sculpture

# FORM



An abstraction of a familiar form can be a ghost of many things and suggests many stories



# FORM



Drawing on the structural essence of boats for sculpture

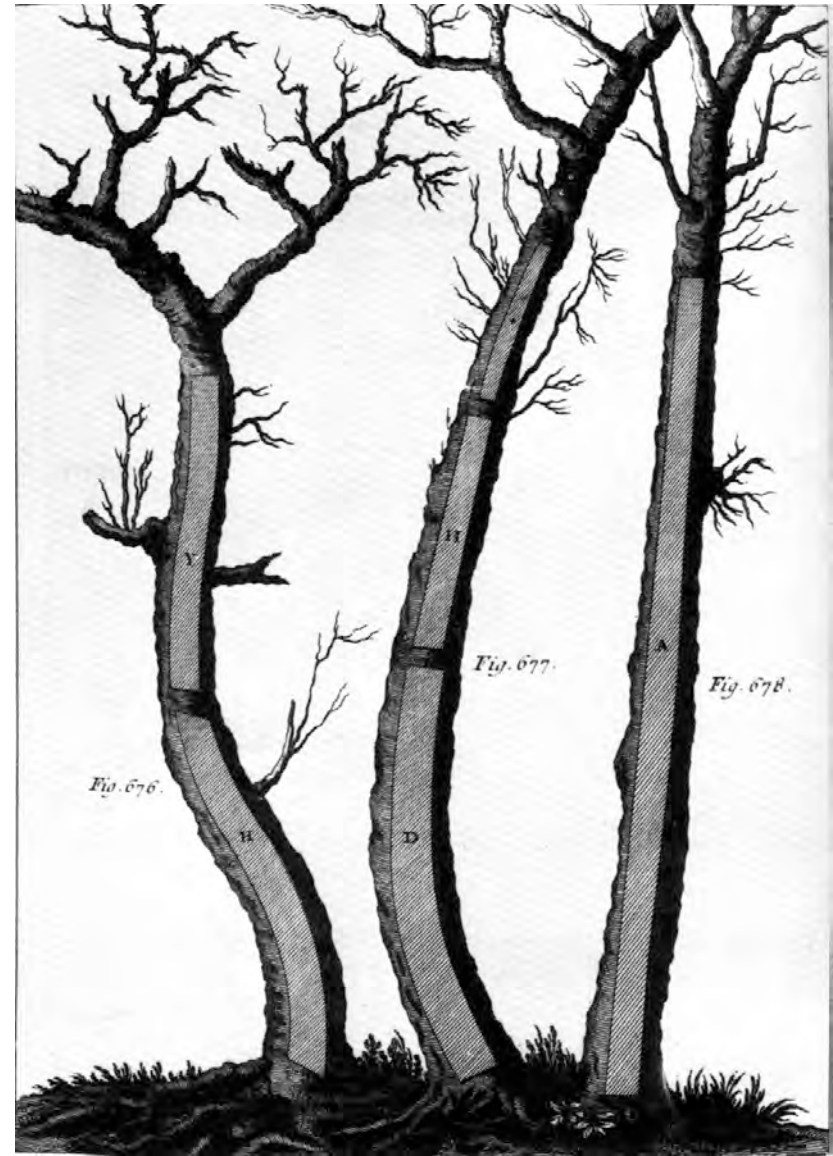
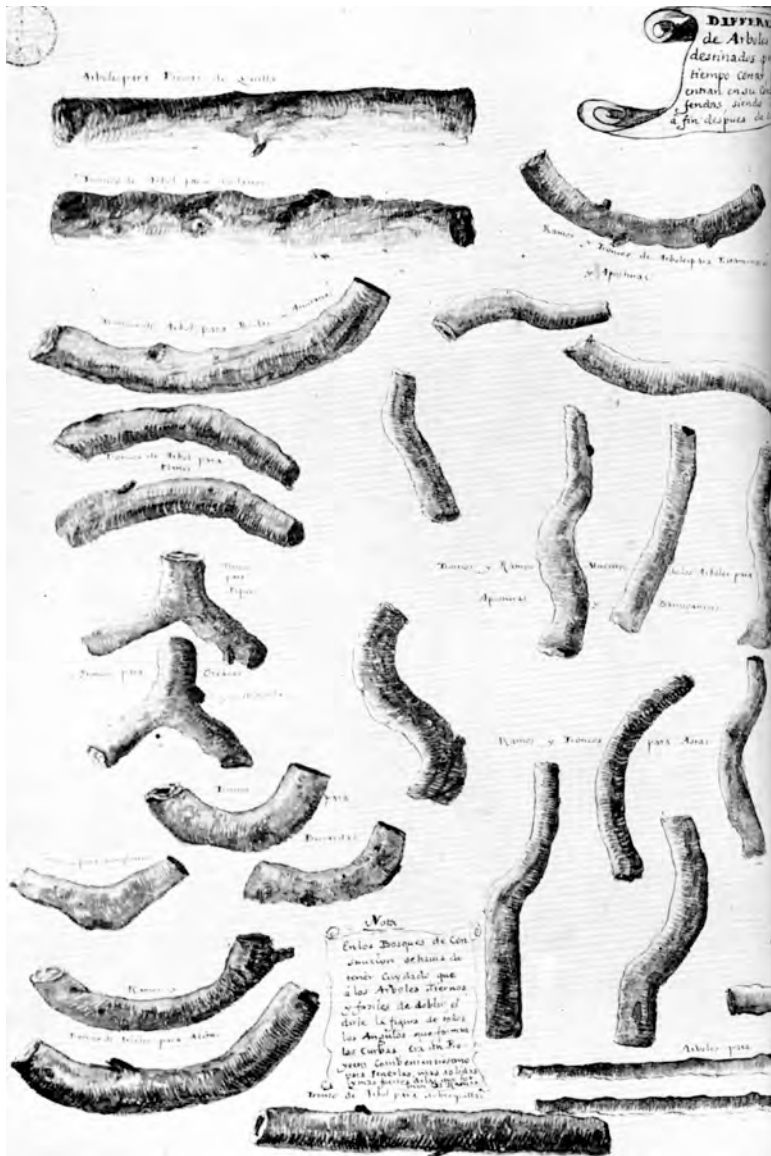
The basic building blocks of wooden boats are immensely varied, elegant in form and scale

When abstracted these boat forms suggest not only a boat, but also the basic structural forms of humans, plants and animals





## CONNECTIONS



Boatbuilding connects the land to the water by transforming a natural resource from the land into something allowing us access to natural waters

## CONNECTIONS



How, what, where and why? A sculpture might have a mysterious presence creating another source for stories and musing



## NATURAL ELEMENTS



When watching sailboats on the water, their lyrical sail forms are evocative of the wind while registering it directly

# SCALE



Scale is so essential to how people experience both a place and an artwork

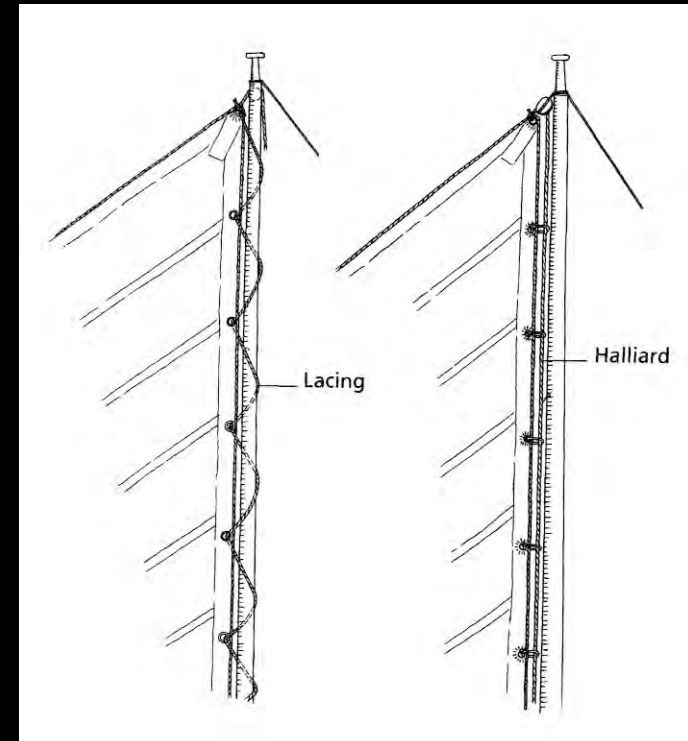
My proposal creates an artwork with a sense of shifting scale depending where one is - down the street, walking next to, or sitting or playing amidst the forms

A careful choice of scale allows people many ways to interact with an artwork as well as feeling held within it



# COMPONENTS OF THE ARTWORK PROPOSAL

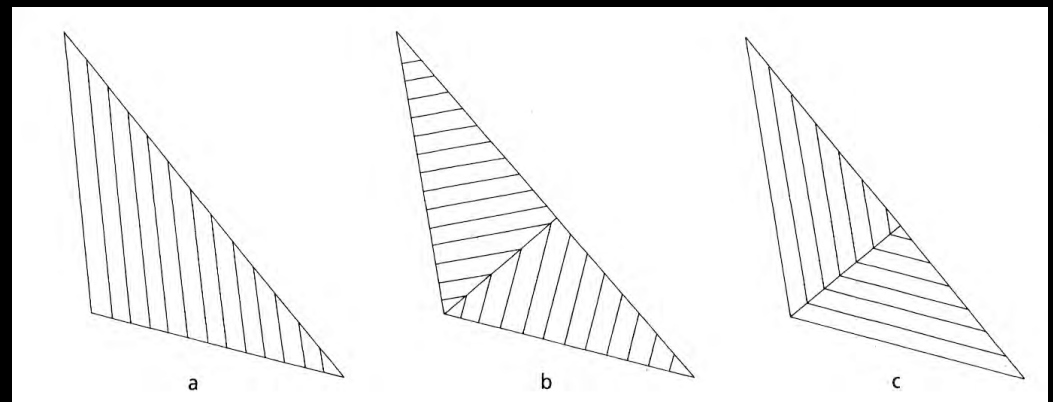
## RE-IMAGINING BOAT BASICS



## SAILS AND WIND

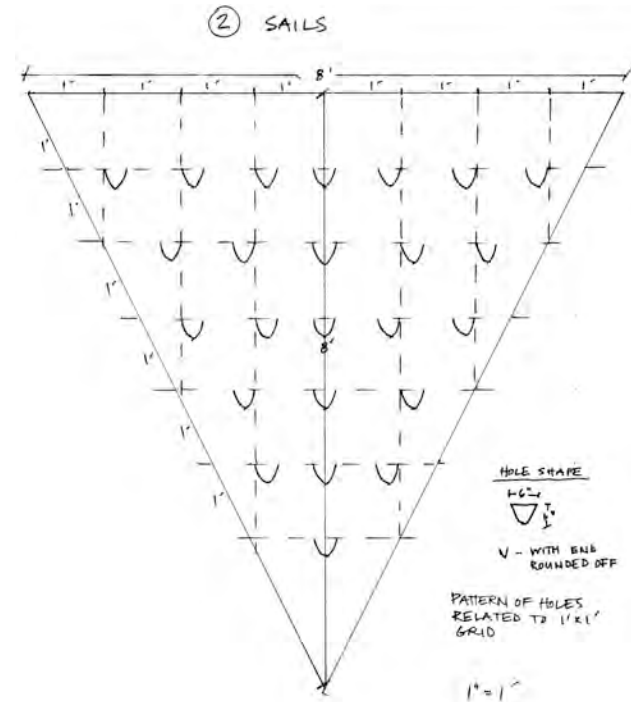
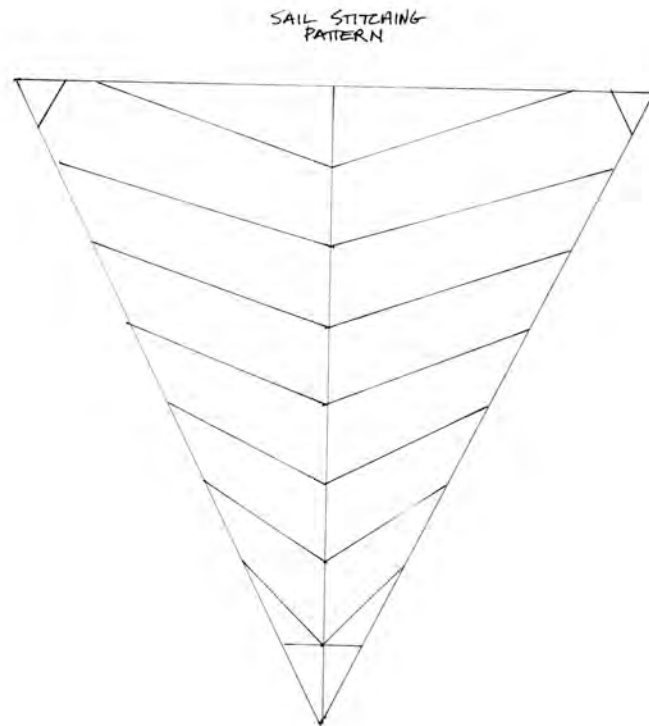
Artful sail patterns are created by design and sewing

They are beautiful to look at as forms and also when they move in the wind





# SAIL FORMS AND DETAIL



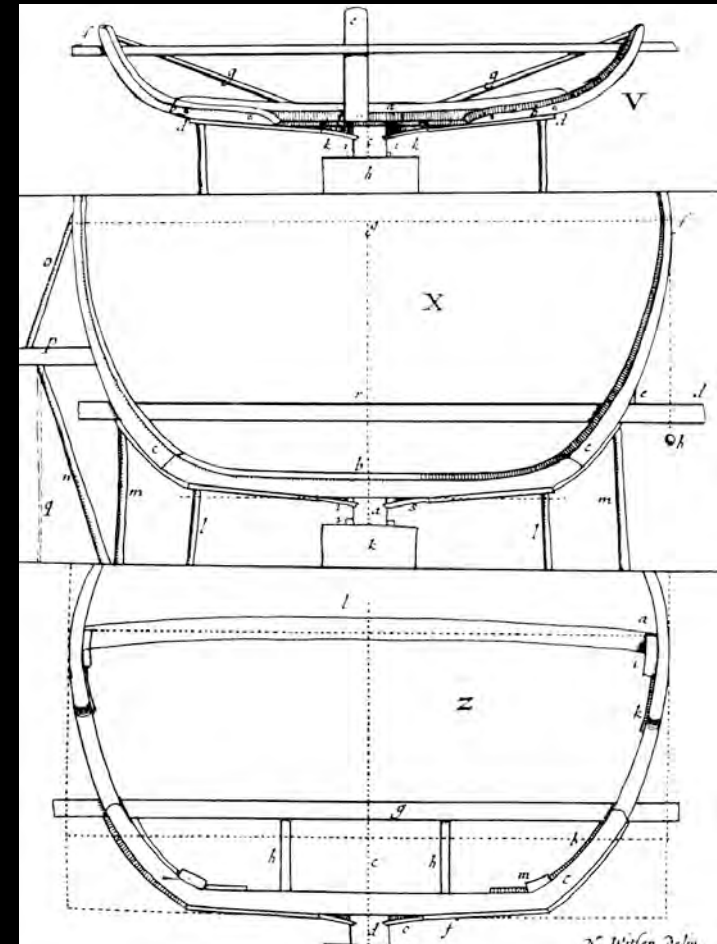
The stitching pattern is like a drawing and is accentuated by the light passing through the sail cloth

The sails will move from horizontal to vertical depending on the strength of the wind. They will be tethered by a cable to keep them from going beyond a certain horizontal point. At the same time the cable tether will move a counterweight up and down the pole along a gauge that will show people the strength of the wind according to Beaufort's Scale.

The sails will have additional smaller shapes cut into the surface allowing the wind to have a second way to register movement. The smaller shapes create a fluttering surface.



## BOAT FRAMES



The myriad shapes of boat structures are inspiring

Seeing a range of boat frame forms evolve within the artwork shows both the beauty as well as the incredible diversity



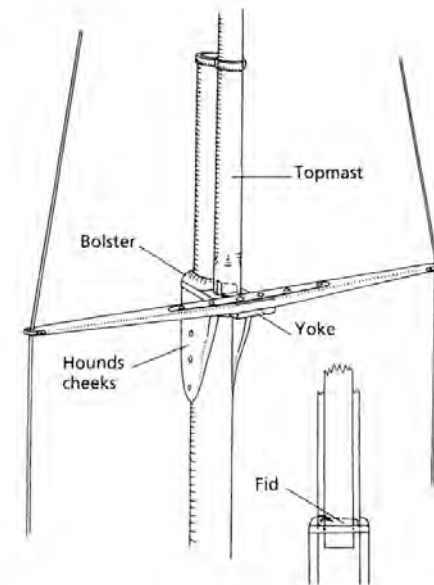
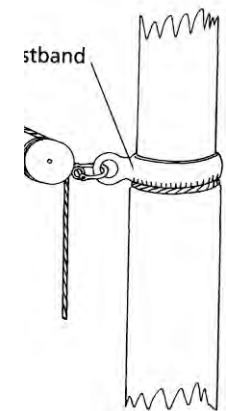
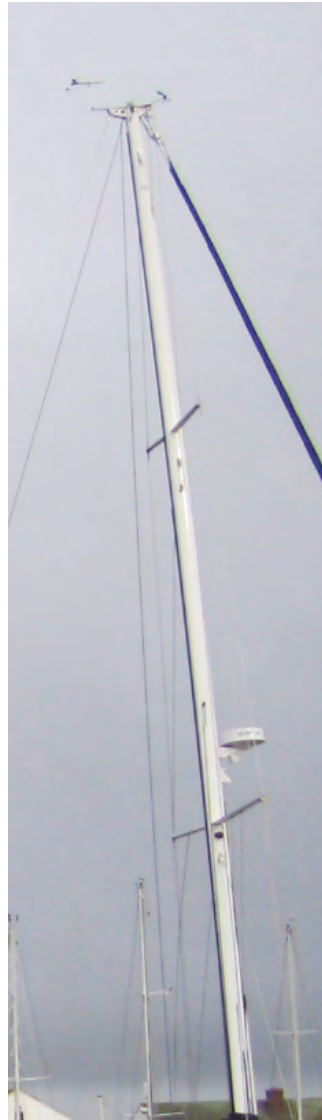
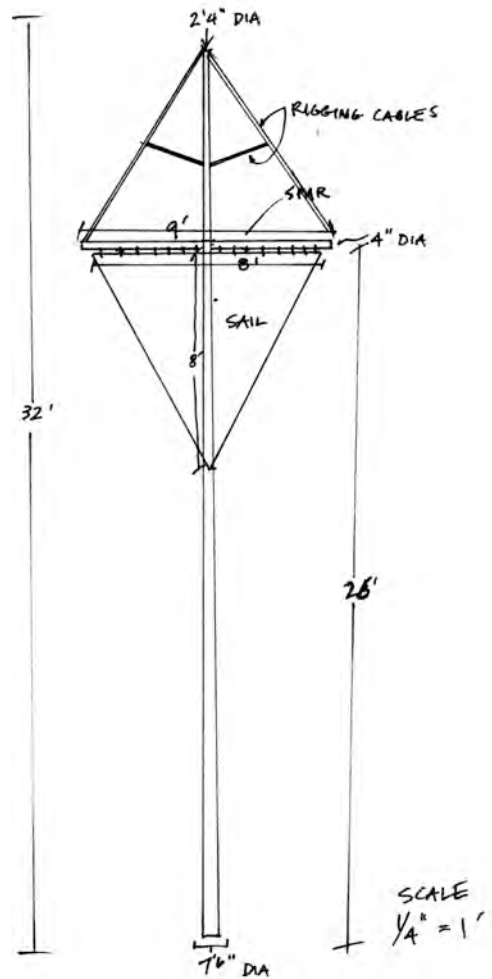


## BOAT FRAMES

The centering point of the boat structure - the keel shows beauty, simplicity and basic function

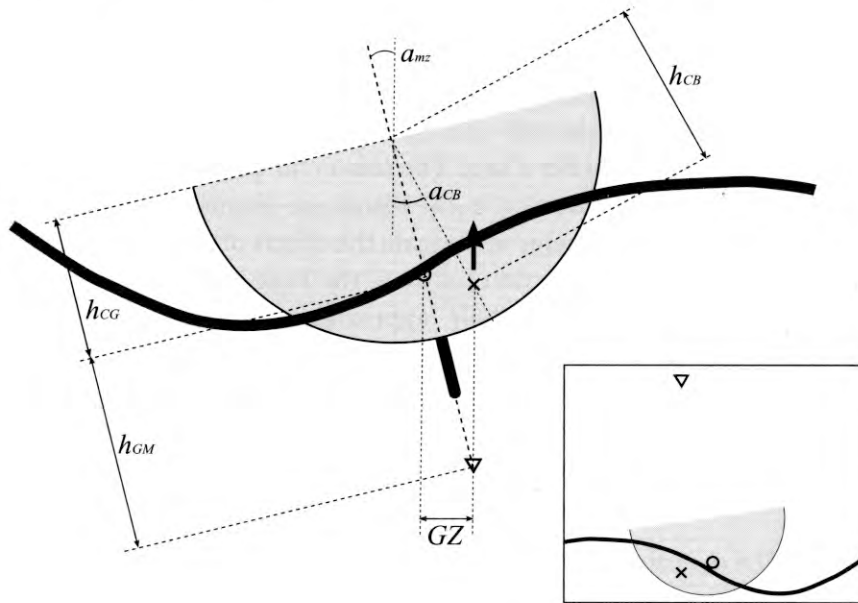


# MASTS



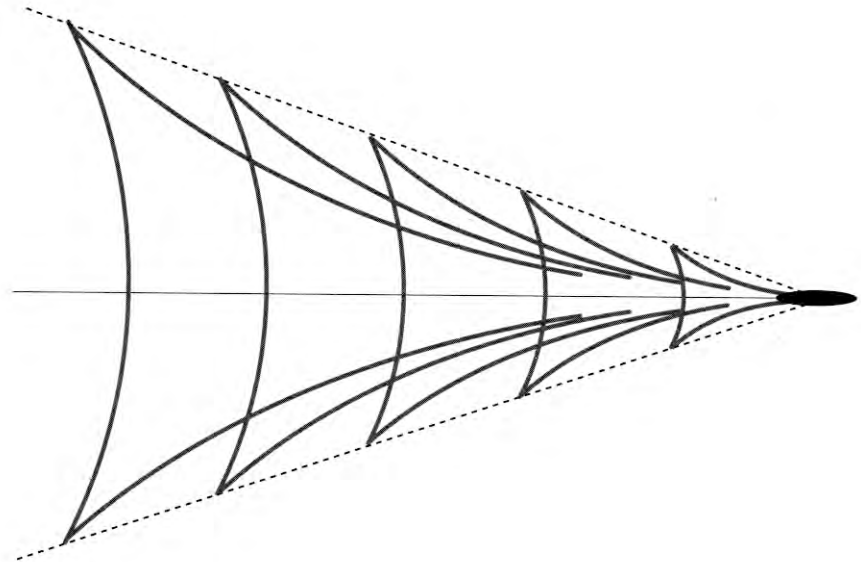
The most visible part, the mast with sail and rigging, appears both simple and complex

## WATER FORMS



The movement of water is seen in relation to the natural elements, to boats and to the land

We see the effects of the constant movement of water at the shoreline





# CENTRAL GOALS FOR

## BY WATER BY LAND

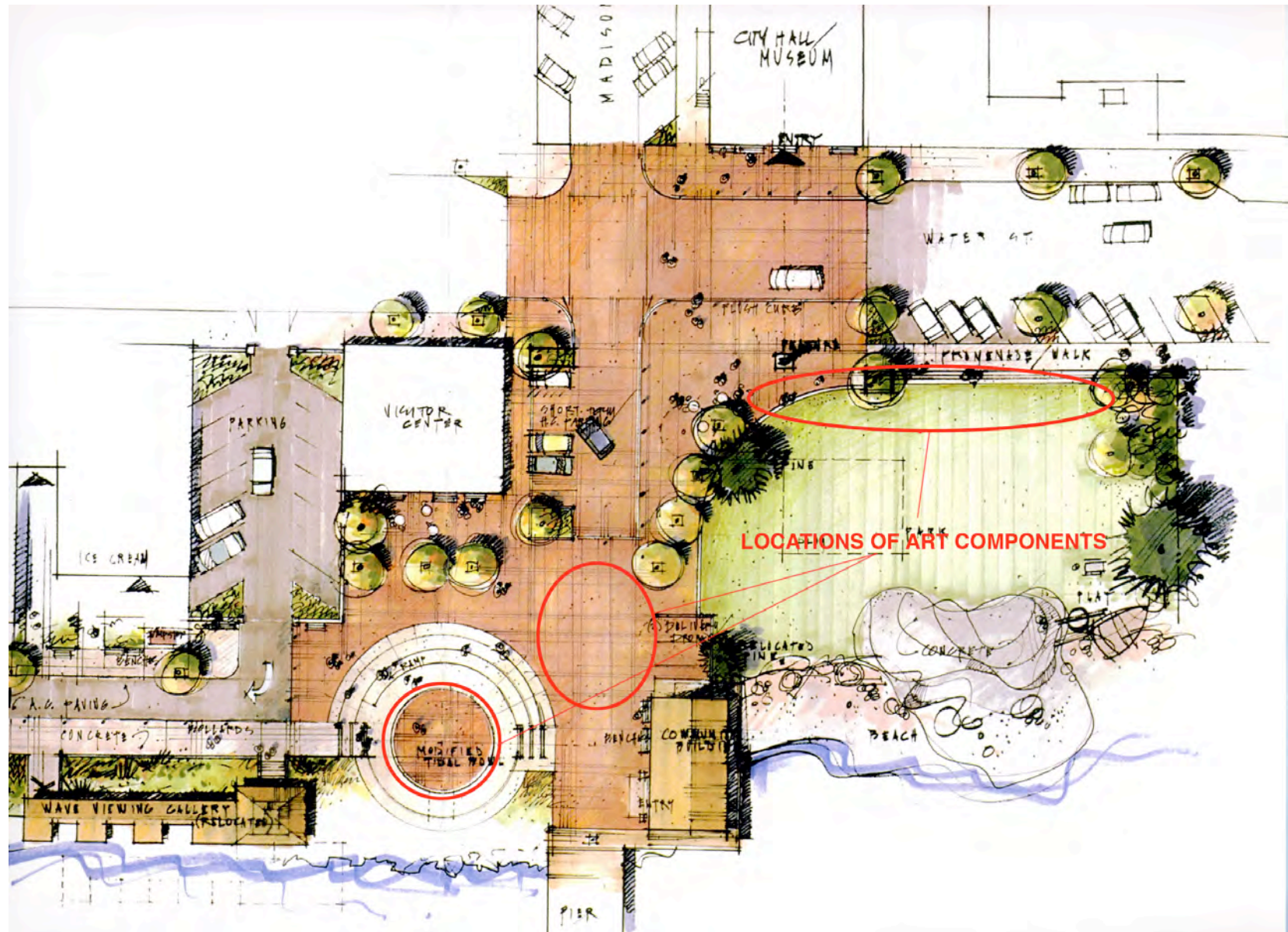
### GENERAL

- HAS A PARTICULAR POWER AND BEAUTY
- TOUCHES ON BOTH SOCIAL AND NATURAL ECOLOGIES
- CAN HANDLE THE WIND DYNAMICALLY
- CONNECTS PLACES WITHIN THE AREA
- READS AS PARTS AND AS A WHOLE
- CAN BE SOCIALLY AND PLAYFULLY INTERACTED WITH

### SPECIFIC

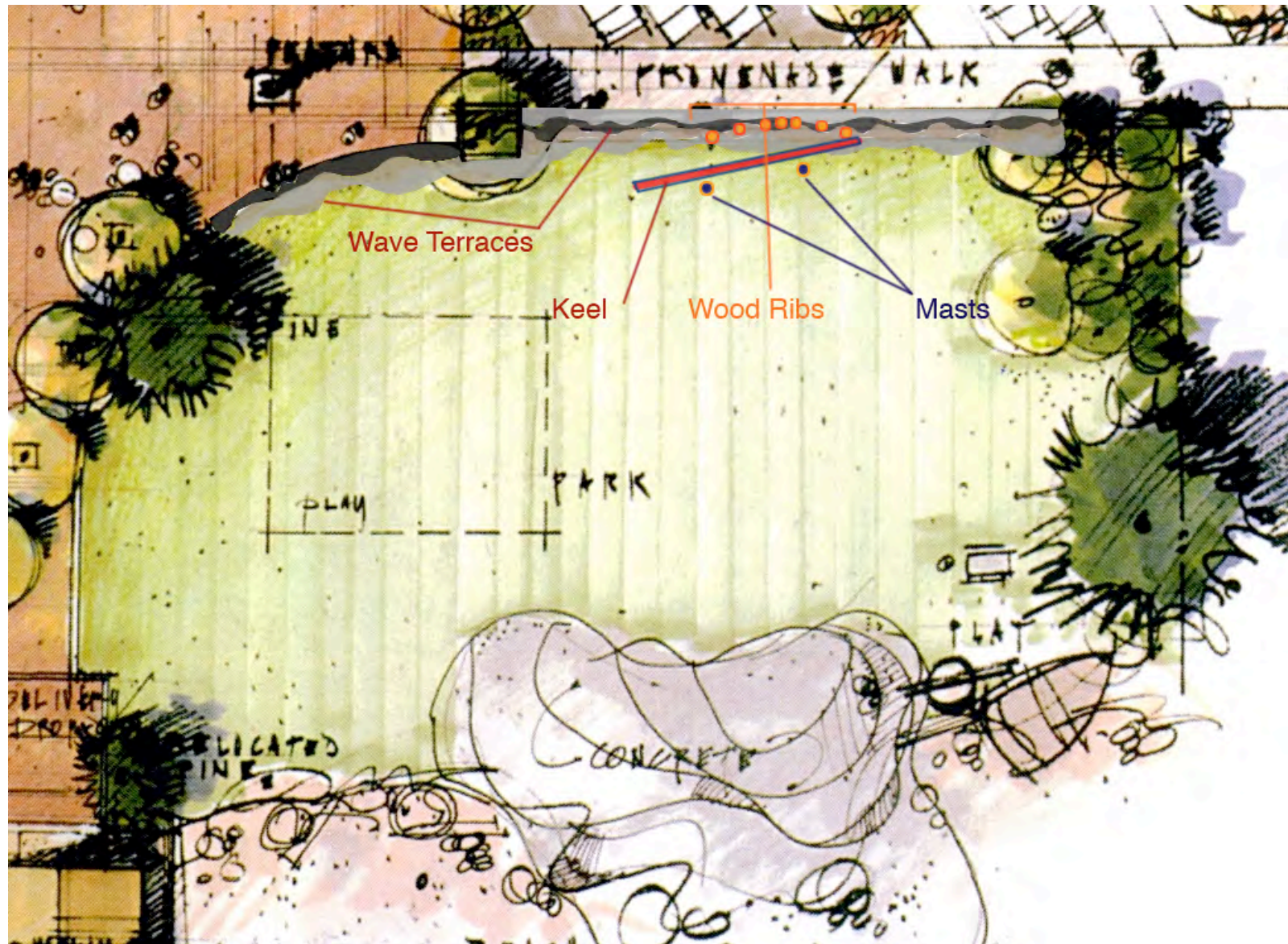
- COMBINE VERTICAL ELEMENTS WITH THE GROUND PLANE
- GRACEFUL SAIL FORMS REGISTER THE WIND FORCE AND DIRECTION
- MOVEMENT WOULD BE NEARLY A CONSTANT

## LOCATION OF ARTWORK





## LOCATION OF MAIN COMPONENT OF ARTWORK





# COMPONENTS OF ARTWORK

## MAIN COMPONENT OF ARTWORK AT EDGE OF PARK

### WATER TERRACES

SUBSTITUTE THESE FORMS FOR WHAT IS CURRENTLY IN LANDSCAPE DRAWINGS  
BUILT AS PART OF CONSTRUCTION

### SPARKLE PAVING

ADD SLAG TO CONCRETE MIX FOR A WATER-LIKE SPARKLING SURFACE  
BUILT AS PART OF CONSTRUCTION

### SOLAR LIGHTS

TWO SIZES OF SOLAR LIGHTS IN GROUND PLANE AND SCULPTURE  
GROUND PLANE LIGHTS INSTALLED DURING CONSTRUCTION UPLIGHT WOOD RIBS AND KEEL  
AND CREATE A "WATER CURRENT LINE" ALONG WATER TERRACES

### WOOD RIBS

12" X 12" AROUND X 6 - 9' HIGH, PURPLEHEART WOOD - WEATHER RESISTANT WOOD  
FORMS SHIFT AND EVOLVE TO SHOW THE DIVERSITY OF BOAT SHAPES  
1/2" STEEL FORM IN CENTER OF LAYERS TO STRUCTURALLY ALLOW CANTILEVER  
STEEL BASES HOLD RIBS 6" ABOVE GRADE AND BRING THEM TO SITTING HEIGHT OF 18"HIGH

### PLANK

6-8" WIDE X 30 - 40' LONG - AFFIXED WITH FABRICATED STEEL DETAIL

### KEEL

12" X 12" AROUND X 45' LONG X 10 - 12' HIGH AT CURVED END - PURPLEHEART WOOD  
STEEL BASES HOLD RIBS 6" ABOVE GRADE AND BRING IT TO SITTING HEIGHT OF 18"HIGH

### MASTS W/ SAILS

STEEL POLES 32' HIGH X 7" BASE TAPERING TO 3" TOP, ENGINEERED FOOTINGS  
TRIANGULAR SAILS 8' WIDE X 8' HIGH PLACED AT 16 - 18' ABOVE GROUND  
SAILS ARE AFIXED TO 9' CROSS BRACE, MOVE IN THE WIND AND ARE TETHERED TO THE POLE BY  
A RIGGING SYSTEM

### STEEL WATERDROPS

WIND SPEED WILL REGISTER AT THE BASE OF THE POLE  
2" - 3" MIRROR POLISHED STAINLESS STEEL WATERDROPS PLACED ON RIBS AND KEEL WILL REFLECT  
THE SKY AND SURROUNDINGS

## ADDITIONAL PARTS OF ARTWORK IN PLAZA AND CIRLE OF AMPHITHEATER

### SPARKLE PAVING

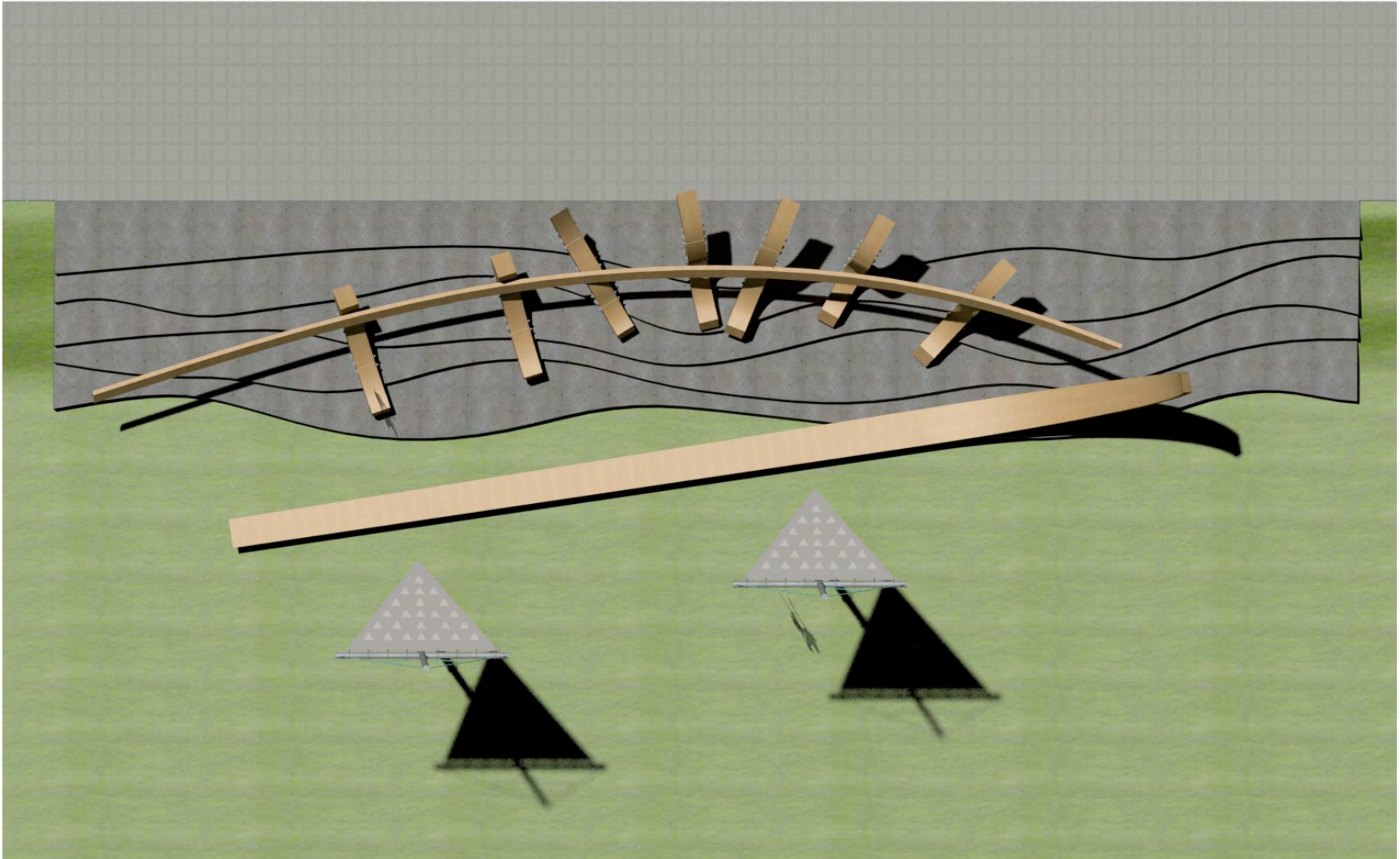
USE AS SURFACE WITHIN CIRCLE OF AMPHITHEATER

### SOLAR LIGHTS

CONTINUE THE WATER CURRENT LINE ACROSS THE PLAZA AND INTO THE CIRCLE OF AMPHITHEATER

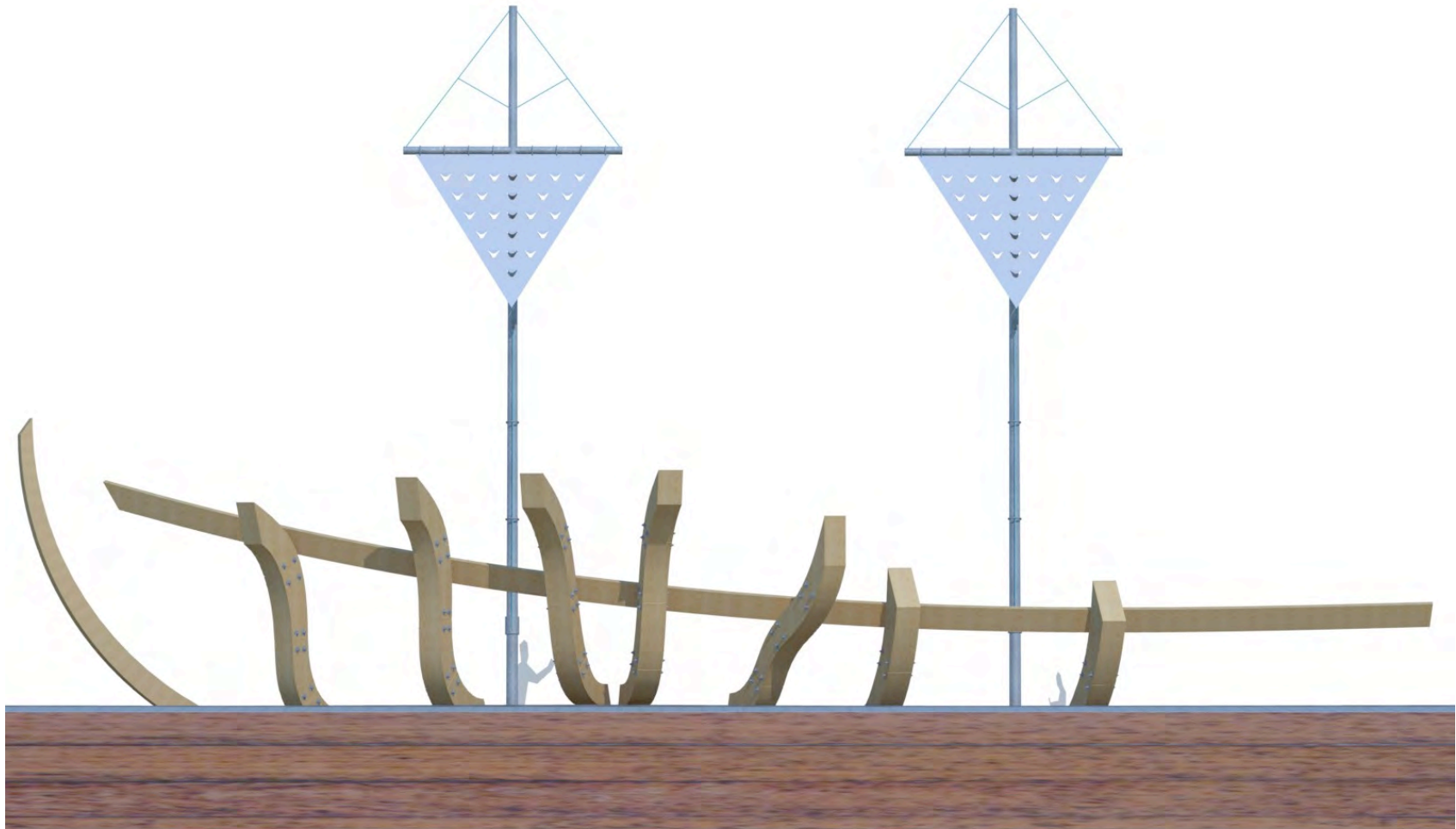
# BIRDSEYE VIEW

SIDEWALK AT TOP

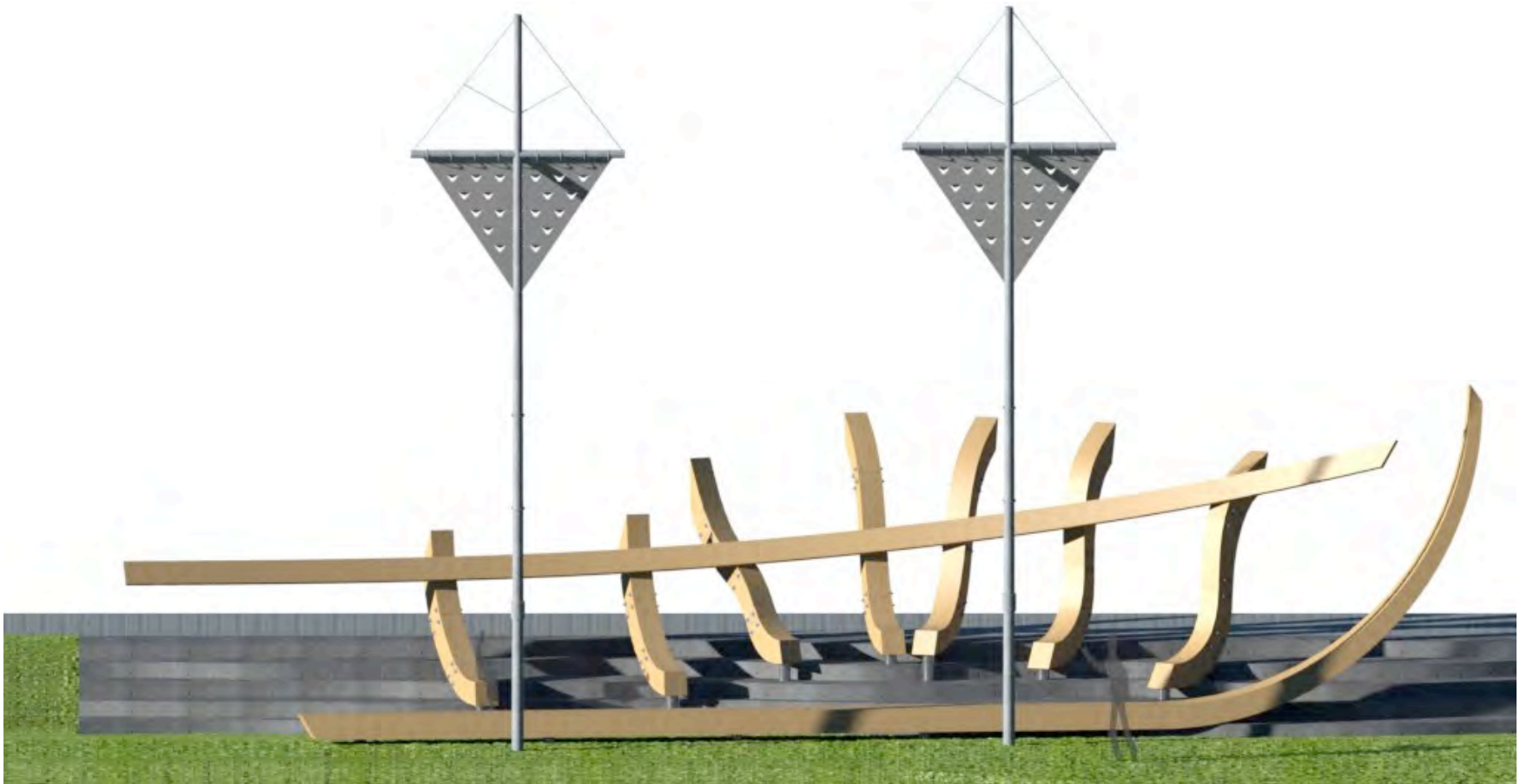




VIEW FROM SIDEWALK LOOKING TOWARD THE WATER



VIEW FROM PARK





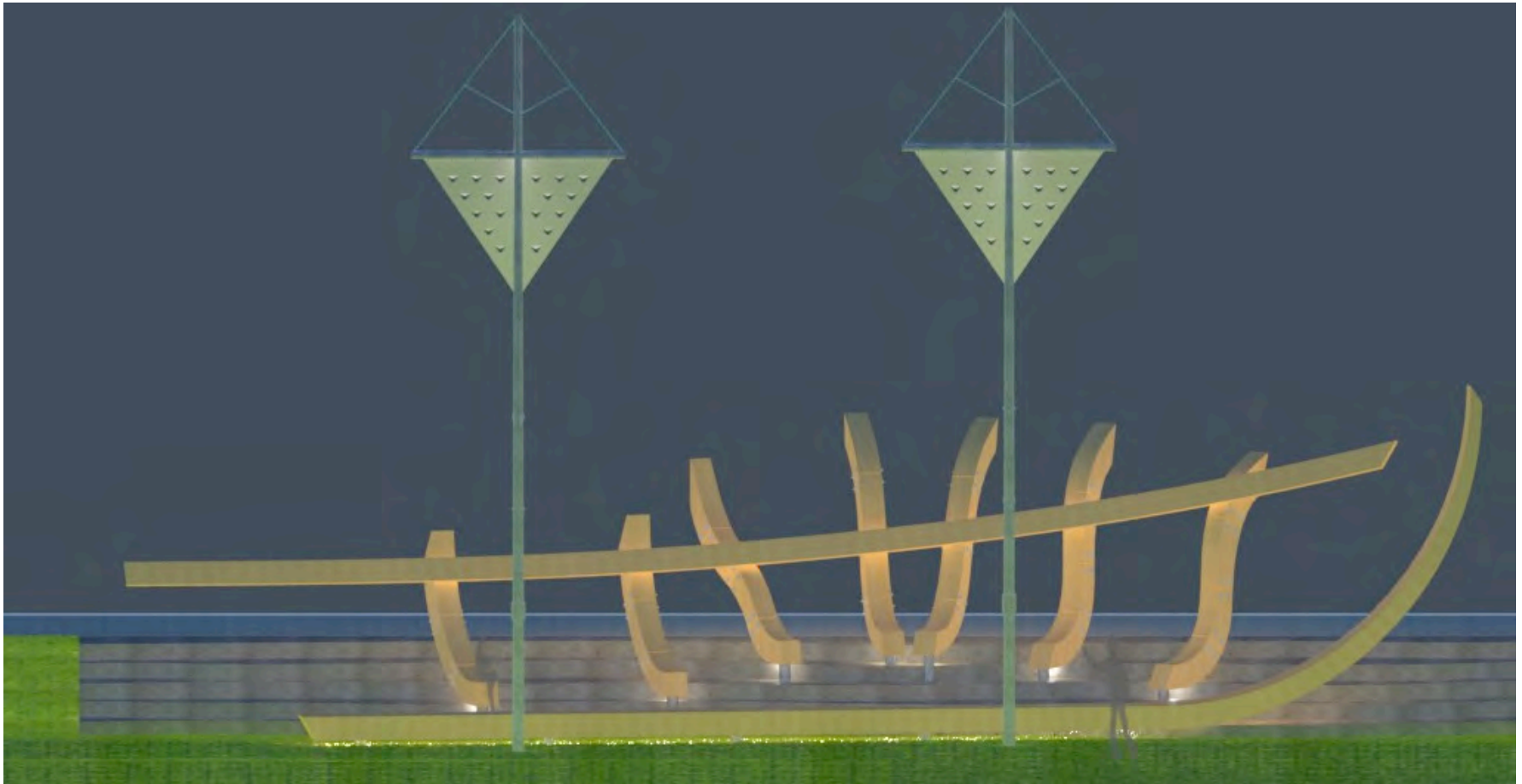
VIEW FROM EAST END



## VIEW FROM MARITIME HERITAGE CENTER



## NIGHT VIEW FROM PARK





## OTHER NIGHT VIEWS





## WOOD DETAIL -

ALL WOOD FORMS FABRICATED AT MARITIME HERITAGE CENTER OVERSEEN BY KEES PRINS, MASTER BOATBUILDER WITH PAID AND VOLUNTEER LABOR





## MASTS

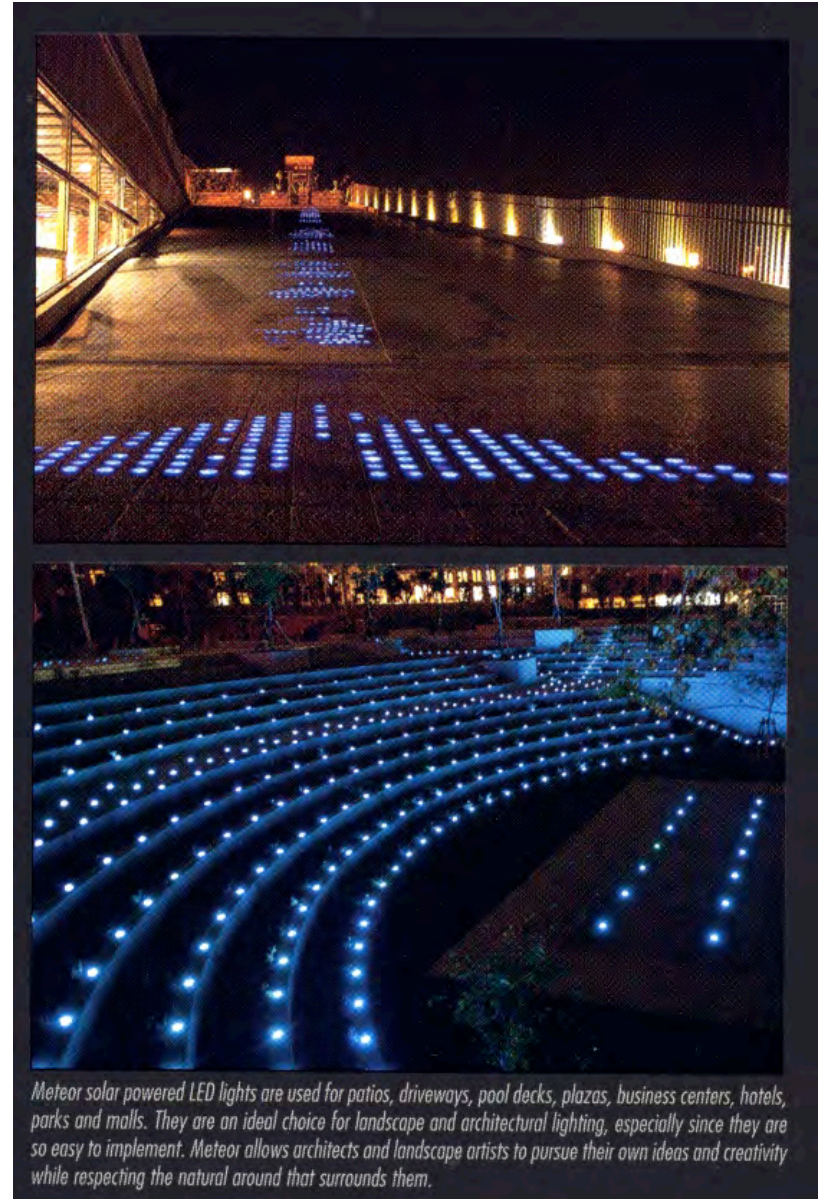
SAILS - DESIGNED AND FABRICATED BY PORT TOWNSEND SAILS

RIGGING, SAIL TETHER AND WIND SPEED REGISTERING SYSTEM -  
DESIGNED BY PORT TOWNSEND RIGGING AND  
KEES PRINS, MASTER BOATBUILDER AT MARITIME HERITAGE CENTER

Note: Sails would actually have a curve in them and not be rigid



## SOLAR LIGHTS



*Meteor solar powered LED lights are used for patios, driveways, pool decks, plazas, business centers, hotels, parks and malls. They are an ideal choice for landscape and architectural lighting, especially since they are so easy to implement. Meteor allows architects and landscape artists to pursue their own ideas and creativity while respecting the natural around that surrounds them.*