



3 PARKS ON THE 3 WATERWAYS PUBLIC ART PLAN

KENMORE WASHINGTON

2020

Carolyn law



KENMORE PARKS PUBLIC ART IN THE PARKS

Carolyn Law
November, 2019

“Having access to and spending time in beautiful, healthy parks correlates with our overall wellbeing. They give us a sense of place, of meaning, imprint on our collective memory and are a fundamental structure in creating connections in both ourselves and our greater community.”

Steven Snell, Parks Policy Planner, Calgary, Canada

BACKGROUND TO UNDERSTAND URBAN PARKS

Parks

Urban parks are not a luxury, but rather an essential component of a healthy, meaningfully balanced life when we live within the built environment of a city. Parks provide a place for people to shift from their daily responsibilities to a more relaxed, open experience of time and place. Parks provide a spectrum of experiences that contribute to personal and family wellbeing, while at the same time strengthening community through shared, interactive use.

Parks are very much about a range of experiences framed by what is happening. There are active and passive activities, differences based on time of day, weather and natural cycles, whether alone or with others, and more. Parks are places that provide the full experiential spectrum - from quiet solace to energetic activities. As such, they offer a fantastic, ever-shifting array of various conditions and unexpected circumstances. These conditions in turn offer park visitors on-going experiences are unique from visit to visit, even if for example, the same trail is walked again and again.

“In merging nature and culture the most successful cities combine such universal needs as maintaining or restoring contact with the cycles of nature, with specific, local characteristics.”

Sally A. Kitt Chappell, Chicago's Urban Nature: A Guide to the City's Architecture + Landscape

Cultural Expression and Parks

Each park is wonderfully unique – the setting, the activities, the land, the vistas, the design. Yet the addition of art in a park can energize, enliven and enrich a

particular park even further. Using art to further expand on a park's particular uniqueness elevates that park to a place with the potential to provide even more memorable connections to place and people.

Adding a cultural, artful voice unfurling in unexpected ways expands the experiences of the environment of the park. Artworks encourage a spirit of creativity among visitors as they engage with imaginative, unexpected additions to a park's environment. This engagement enhances the potential for remembering each visit by changing how people are engaged physically, mentally, and emotionally from moment-to-moment while in the park.

Therefore an art intervention in a park should generate unexpected experiences paired with the more typical park experiences of the weather, light, time of day, planned and unplanned activities, time spent alone or with friends and family, unexpected conditions or friendly meetings that shift one's planned uses of the park.

Kenmore's Log Boom, Rhododendron and Squire's Landing Parks

Three Kenmore parks, bordering on the intertwined natural waterways ecosystem of river, stream and lake that define the City, will be grouped together for this public art opportunity. This approach gives an artist the prospect of creating stimulating, responsive artworks that showcase the interconnected waterway systems at work in Kenmore's natural environment. This enhances the community's understanding and appreciation of a wonderful part of their City's environment. It is important to take full advantage of the uniqueness of Kenmore's water tied to open spaces to give the community places of respite that contrast with the surrounding built and infrastructure environment.

The process for these linked public art projects is to select an artist in a timely manner so that they would be able to work in a limited collaboration with the park design team to develop artworks that underlay and complement the design of each park and impact the potential experiences people will have within the parks.

Budget: \$143,473 (Design/Fabricate/Install)

With potential overlap with design components and construction budget

ART APPROACH OUTLINE

Art Project Goals

The primary goal is to have an artist create a set of linked public artworks that are genuinely integrated into the natural environment and physical conditions of these parks. All artworks in each of the three parks will uniquely highlight the special relationship Kenmore land has to water and the varied shoreline edge.

Other goals:

- Encourage a range of artwork types to address and weave into the specific environment and designs of each park.
 - Artworks could have diverse conceptual underpinnings and cultural references, and could be of a variety of scales, materials, and how they engage the natural elements.
- Artworks are woven into the parks in ways that creatively expand and deepen the range of momentary experiences all park users will have each time they visit.
- Developed artworks are integral to the community's understanding and sense of each park, as well as how people experience it - whether regular or one-time visitors.
- Artworks impact each park in a special, iconic way emphasizing the specialness of Kenmore's relationship to its varied, rich shoreline.
- Artworks interact with and reveal the notable qualities of the land and water, daily shifting natural elements, park design and uses.
 - Artworks would explore and potentially respond to natural elements such as rainwater, water conditions of the river, stream or lake, light and shadows, wind, seasonal and time of day changes, etc. -- revealing these fundamental natural elements and forces to people in imaginative ways. This approach becomes a signature of the artworks in these parks.
- Artworks are engaging and meaningful for all by paying deliberate attention to diversity of ages of those who will be visiting and using these parks.

THE THREE PARKS – A FRAMEWORK FOR ART

These parks will be used in a number of different ways – such as:

- A quick commute through on bike.
- Walking for pleasure, as well as exercise.
- Interacting directly with the water through paths, view nodes, and active uses such as hand launched boats, paddleboards, etc.
- Nature viewing
- Playing and picnicking

Thus it is important for the artist to understand this range of uses and more generally, the way parks are typically used and experienced.

The artwork should provide unique experiences that lodge in people’s momentary experiences of each park’s environment, as well as lingering memories. In conversation with the designers and the City, the artist can determine whether it is more powerful to concentrate one unique experience within each park or a set of linked experiences occurring within the park.

The preferred artist for this project should be able to articulate a deep interest in natural environments and ecosystems, as well as demonstrate through past artwork how they have previously connected to natural places. Interested artists should further articulate how they perceive this specific opportunity to build experiential bridges to these particular park environments and uses, and that they are interested in exploring, working with and achieving a connection to.

ART OPPORTUNITIES IN EACH PARK

The following framework of integrated artwork opportunities for each park gives the chosen artist ample opportunities to select from the range of highlighted locations listed within each park. That said, they will have to be strategic in determining the most effective way to use the art budget spread over the three parks.

LOG BOOM PARK

The primary new construction in this park begins west of the existing restroom and continues westward past a new hand carried craft rental building, the new beach with gathering plaza, into a more natural area with a connection to the shoreline that is more secluded. It ends with a connection to the Burke Gilman Trail. There are select locations in the park an artist can integrate art into that

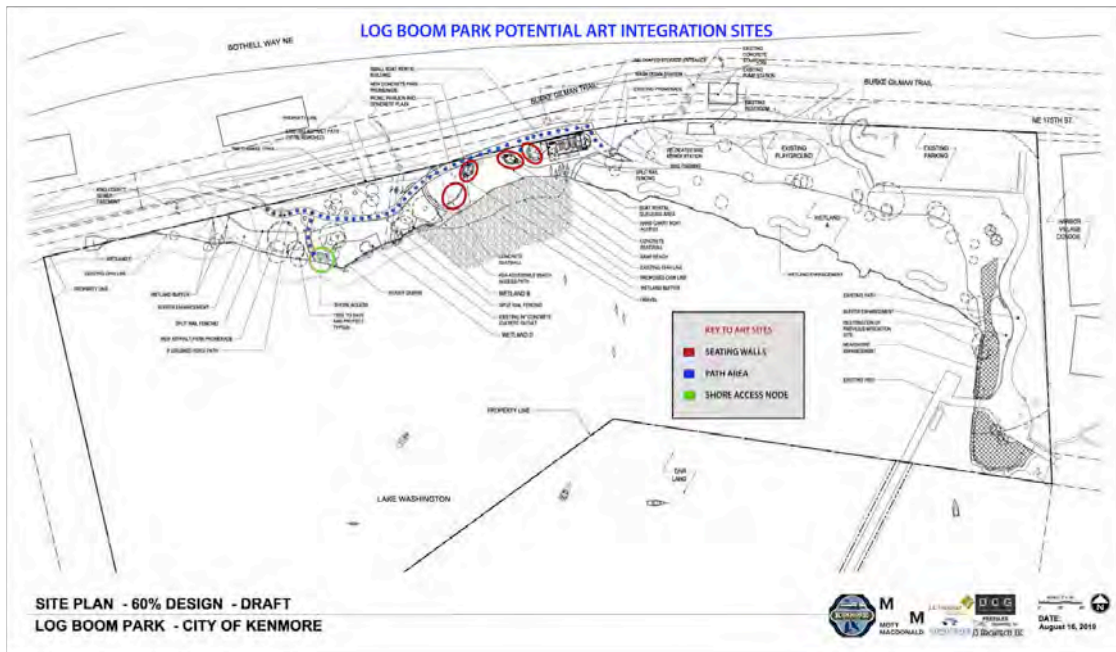
have the potential to overlap with the design construction documents and construction budget.

The most effective way for art to impact this park is to:

- Consider a sequential, selectively placed set of artworks relating to the new section of the park's linear western half of the park's pathway system
- Place art at particular points of interest along the path, carrying people along
- Place art in the more natural, wooded area to create an evocative, special environment within the larger park environment

Functionally, also available to consider are:

- Several seating walls in the gathering plaza
- Surfaces of the concrete portions of the new pathway



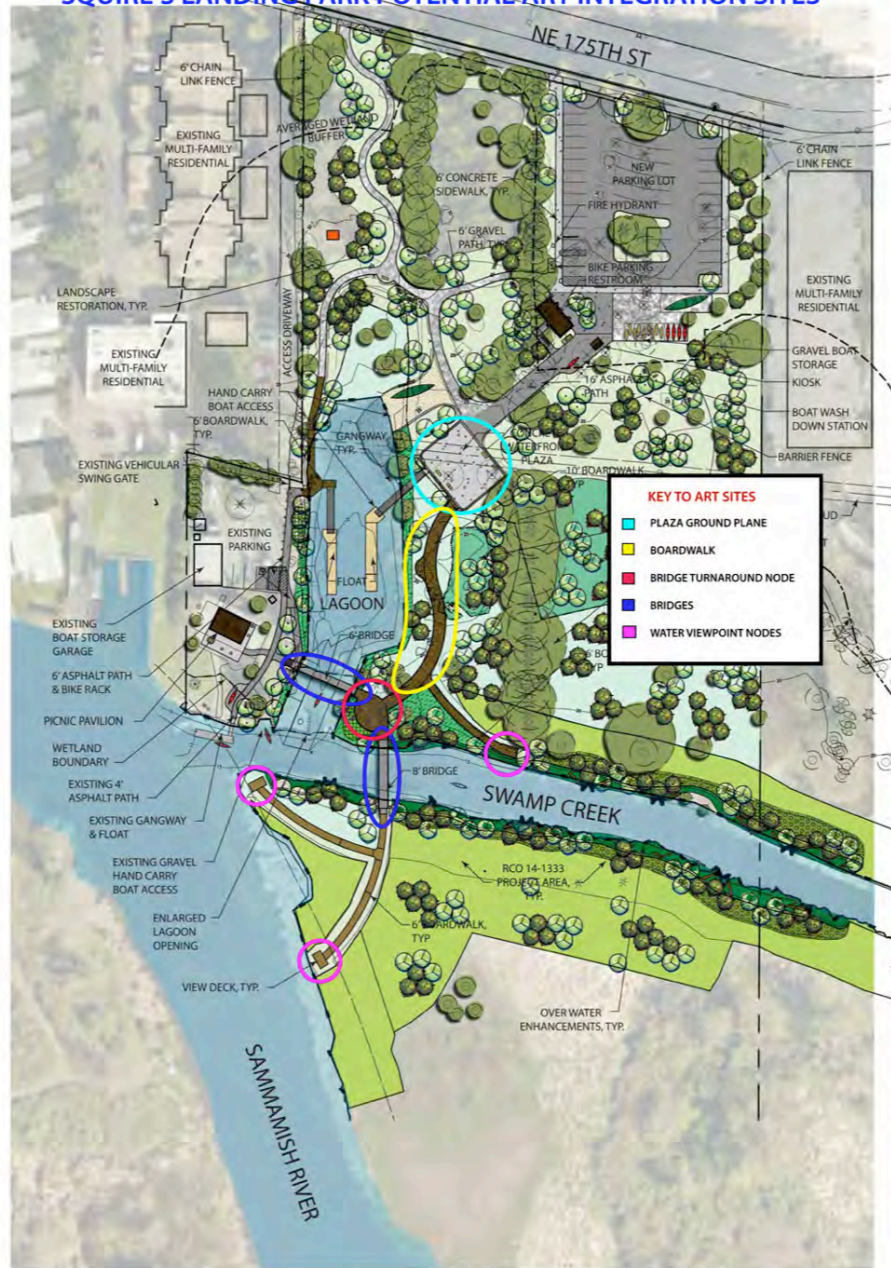
SQUIRE'S LANDING PARK

The natural and functional environments of this larger park will be highly varied. People can enter the park from the street on foot on a forested pathway or through the parking area similar to those who arrive by car. Park users will be there for many reasons -- passive time in the forested area on paths and near the water at the shoreline edges, bringing many types of watercraft to launch, picnicking and more.

There are numerous components and areas of the park that an artist can work to integrate art into, and potential to overlap with the design construction documents and construction budget:

- A central plaza area with links to paths and watercraft launching access. A key path/boardwalk continues from the plaza towards the water - passing through wetlands and adjacent to a stunning row of old, second growth cedar trees.
- At the end of the boardwalk is a turnaround node at the water's edge.
- Two pre-fab pedestrian bridges cross over water: one across the lagoon to a picnic area; the other over Swamp Creek to paths leading to the Sammamish River.
- Three water view nodes on boardwalks ending at both waterways.

SQUIRE'S LANDING PARK POTENTIAL ART INTEGRATION SITES



Squire's Landing Park
60% Site Plan



10/09/2019 Scale: 1" = 50'

RHODODENDRON PARK

This is an established park with new access to the Sammamish River created by a boardwalk and trail through an enhanced natural open space leading to the riverfront in 2018. It ultimately provides access to the river shoreline and a float on the river. There are also environmental enhancements to the shoreline and wetlands. The boardwalk is an important addition to the park as it gives people water access – either directly for boats or for the pure enjoyment of being at the river. Within the main part of the park there are no views of the river.

The boardwalk leaves the main part of the park at the northwest corner of the large open area of the park. The entrance to the boardwalk is not particularly visible, so not readily apparent. For some, the river access remains a hidden gem in the park.

There is an opportunity to:

- Highlight the boardwalk where it connects with the main part of the park
- Gesture towards the river and the float



Proposed Schedule

| Milestone | Scheduled Date |
|--|-----------------------|
| RFQ Issued | November 22 |
| Materials submittal deadline | December 13 4PM |
| Selection Panel meeting | December 18, 19 or 20 |
| Interview Finalists | January 6, 7 or 8 |
| Panel gives recommendation on artist to Council | January 13 |
| Council authorization to proceed and execute a design contract | January 13 |
| Contract scope development for design | January 14 - 31 |
| Execute design contract. A fabrication contract follows acceptance of artwork proposals in design phase. | January 2020 |