

MY LAKE COUNTY LANDSCAPE

“One of the things I love about Lake County is how big the landscape feels. I once looked down from the window of a commercial airplane and said, ‘Hey, that’s Abert Rim!’ Our geology is so big you can identify it from 30,000 feet.”

Untitled

Photo © by and used courtesy of Amy Hutchinson



MY LAKE COUNTY LANDSCAPE

“I have been fortunate enough most of my adult life to live, or live next to where people vacation in the west and I think Living in Lake County is the best yet. The opportunity for taking great images is unlimited.”

Reflections of a Summer Evening

Photo © by and used courtesy of Clark T. Heglar

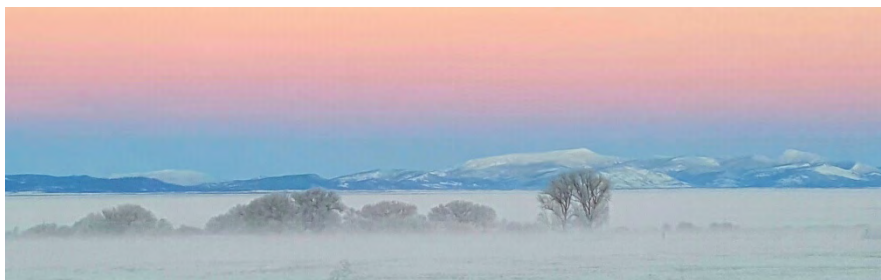


MY LAKE COUNTY LANDSCAPE

“The sheer uniqueness of Lake County's landscape calls to that inner person perceiving such wonder and being humbled by it.”

Title: Early on a Frosty Morn (Goose Lake Valley)

Photo © by and used courtesy of Gregg Smith

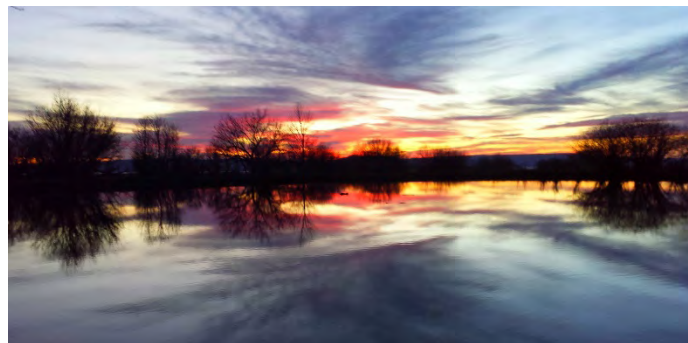


MY LAKE COUNTY LANDSCAPE

“Having chosen to return here behind the sagebrush curtain to retire, I am in constant awe of nature’s beauty, and forever thankful.”

Title: Fond Reflections

Photo © by and used courtesy of Gregg Smith

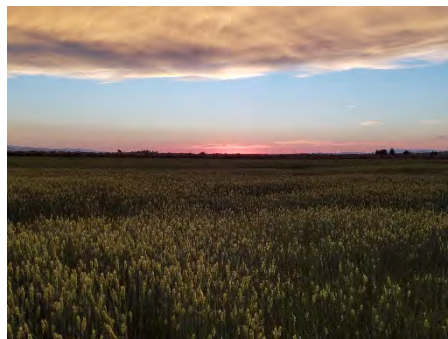


MY LAKE COUNTY LANDSCAPE

“When we have visitors new to Lake County, I always suggest they visit Crack in the Ground, the Lost Forest, and the hot springs at Hart Mountain, as well as the Sun Stone area while they are there. The sunsets and sunrises are never ending, and never disappoint.”

July 2017

Photo © by and used courtesy of Glenna Wade



MY LAKE COUNTY LANDSCAPE

“I love the wide open
vistas and dramatic weather.”

Bauer Creek, October 2016

Photo © by and used courtesy of John Blacet



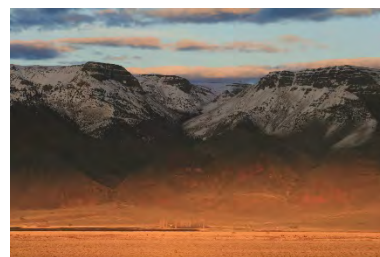
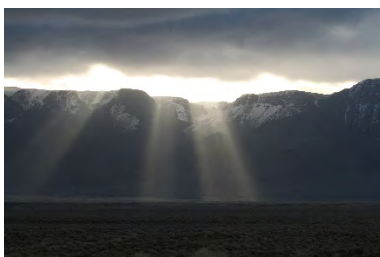
MY LAKE COUNTY LANDSCAPE

“I feel Hart Mountain is a “must see” for out-of-town visitors! It is beautiful in every season, and it is wonderful to watch how the light transforms the whole look of the mountain, sometimes in a matter of just minutes!”

Upper: Morning Glory on Hart Mountain

Lower: Fading Light on Hart Mountain

Photos © by and used courtesy of Julie Laird



MY LAKE COUNTY LANDSCAPE

“I feel Hart Mountain is a “must see” for out-of-town visitors! ... Whether viewing the mountain from its base, or looking down on Warner Valley from the top, Hart Mountain is a Lake County treasure.”

Title: Low Light on Hart Mountain

Photo © by and used courtesy of Julie Laird



MY LAKE COUNTY LANDSCAPE

Special Place:

“Definitely the Westside community. From there you can see the wildlife and landscape of the entire valley.”

Crane Mountain - Westside looking across Goose Lake at Crane Mountain

Photo © by and used courtesy of Justin Rhea



MY LAKE COUNTY LANDSCAPE

“If I ever chose to leave Lake County for good, I would miss the abundance of agriculture, wildlife, and wide open spaces. There truly is no place quite the same.”

Title: Lane Ranch Gateway

Photo © by and used courtesy of Jade Stockton



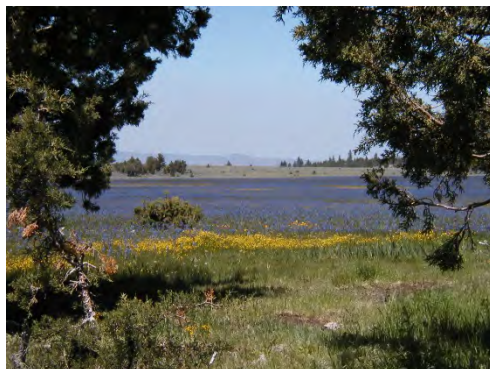
MY LAKE COUNTY LANDSCAPE

Special Place:

“On the trail between Morgan Butte and Round Mtn. To the west you can see the Chewaucan River basin and the forest and to the east you see high desert conditions with Abert Rim and Hart Mtn. in the background. The view represents the diversity that exists in Lake County.”

Untitled

Photo © by and used courtesy of Keith Barnhart



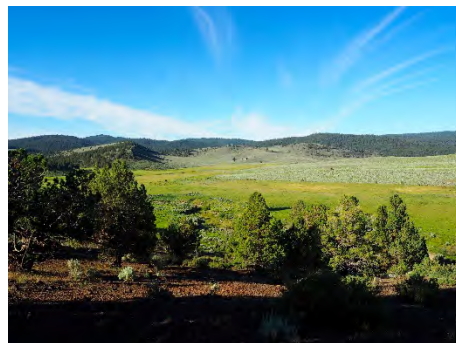
MY LAKE COUNTY LANDSCAPE

Special Place:

“On the trail between Morgan Butte and Round Mtn. To the west you can see the Chewaucan River basin and the forest and to the east you see high desert conditions with Abert Rim and Hart Mtn. in the background. The view represents the diversity that exists in Lake County.”

Untitled

Photo © by and used courtesy of Keith Barnhart

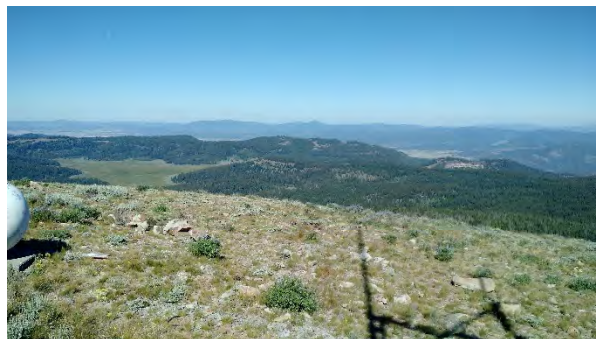


MY LAKE COUNTY LANDSCAPE

“If I was to take a visitor anywhere in Lake County, I would take them to Drew's Peak Lookout. I like this area because you can see the rolling hills and the terrain of Lake County.”

Untitled

Photo © by and used courtesy of Lance McMahan



MY LAKE COUNTY LANDSCAPE

“Although I only lived in Lake County for a little over a year, I was constantly mesmerized by the beautiful places and the kind people in the region. I was able to explore numerous wild places around the high desert and in the Warner Mountains.”

Title: Ana River Storm

Photo © by and used courtesy of Levi Old

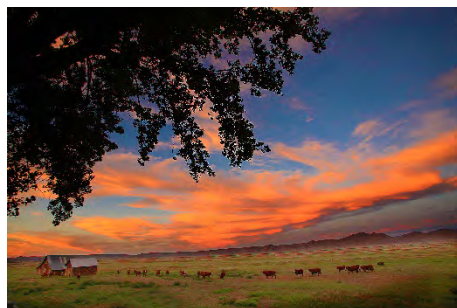


MY LAKE COUNTY LANDSCAPE

“[Lake County] is a diverse and beautiful landscape. The views are extraordinary. The solace of the landscape unforgettable.”

J Spear Ranch, Chewaucan Valley

Photo © by and used courtesy of Larry Turner

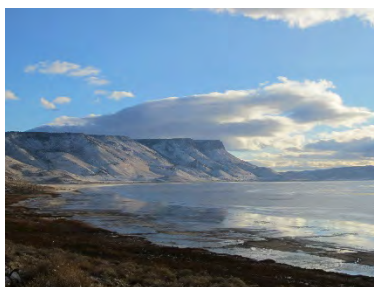


MY LAKE COUNTY LANDSCAPE

“The ever-changing weather has made the most change on our Lake County landscape. Some years are dry and hot, others are cooler and wetter.”

Fall 2016

Photo © by and used courtesy of Lissa Webbon



MY LAKE COUNTY LANDSCAPE

“Sunset and nature are
my favorite things at
Drews Reservoir.”

Untitled

Photo © by and used courtesy of Mary Ann Thomas.



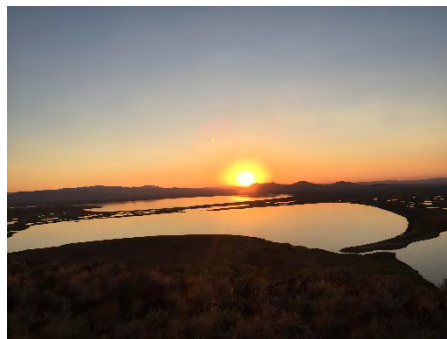
MY LAKE COUNTY LANDSCAPE

“When I went to Hart Mountain in August 2006 for the first time, the lakes viewed from the lookout were all full.

For the next 10 years, the valley was dry, all white dust in vaguely circular patterns, like placeholders for ghost water, even in spring. Now, at long last, Lake County lives up to its name again.”

Hart Mountain Lookout

Photo © by and used courtesy of Margot Dodds

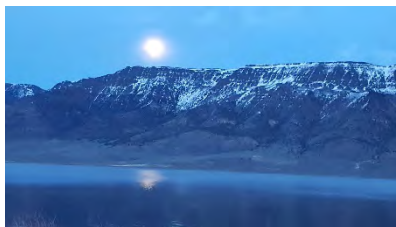


MY LAKE COUNTY LANDSCAPE

“I was drawn here by the Hart Mountain Antelope Reserve. If I left this area I would miss the pleasant sometimes feeling of being they only human in one hundred square miles.”

Hart Lake, Hart Mountain

Photo © by and used courtesy of Roger Brooks



MY LAKE COUNTY LANDSCAPE

“I loved going to Ana every chance I got. It was my little piece of tranquility. Beautiful place to clear my mind.”

Ana Reservoir

Photo © by and used courtesy of Shandy Cross



MY LAKE COUNTY LANDSCAPE

“My favorite part of the Christmas Valley area is the beautiful sunrises and sunsets. As a veteran school bus driver I have seen thousands of sunrises and sunsets. All of Oregon is beautiful but Lake County, especially Christmas Valley, has some of the most amazing landscape and the most beautiful sunrises and sunsets. Never the same. Always different in some way.”

Untitled

Photo © by and used courtesy of Tika S. Blixt

